



NORTH CAROLINA
**RAIL &
COMMERCE
PARK**

Global Access | Local Connections





You are searching for a strategic site that will provide you and your business maximum ROI for your business growth and expansion.

- ✓ suitable for your needs
- ✓ access to qualified labor force
- ✓ eager to offer robust economic incentives and partnerships

The problem is, there are a lot of site options vying for your attention and investment, which can leave you feeling fearful and anxious, knowing that making a bad site selection will undoubtedly have significant time and financial consequences.

We believe every growing business should have the confidence to invest into a sustainable and scalable location that allows for maximum growth and success. We understand the pressure of the site selection process, which is why we are fully invested in delivering the very best for you and your business as your economic partner and advocate.

So, let's talk!

Don't lose any more time, energy, and money, and instead confidently be on your way towards peace of mind and business success.

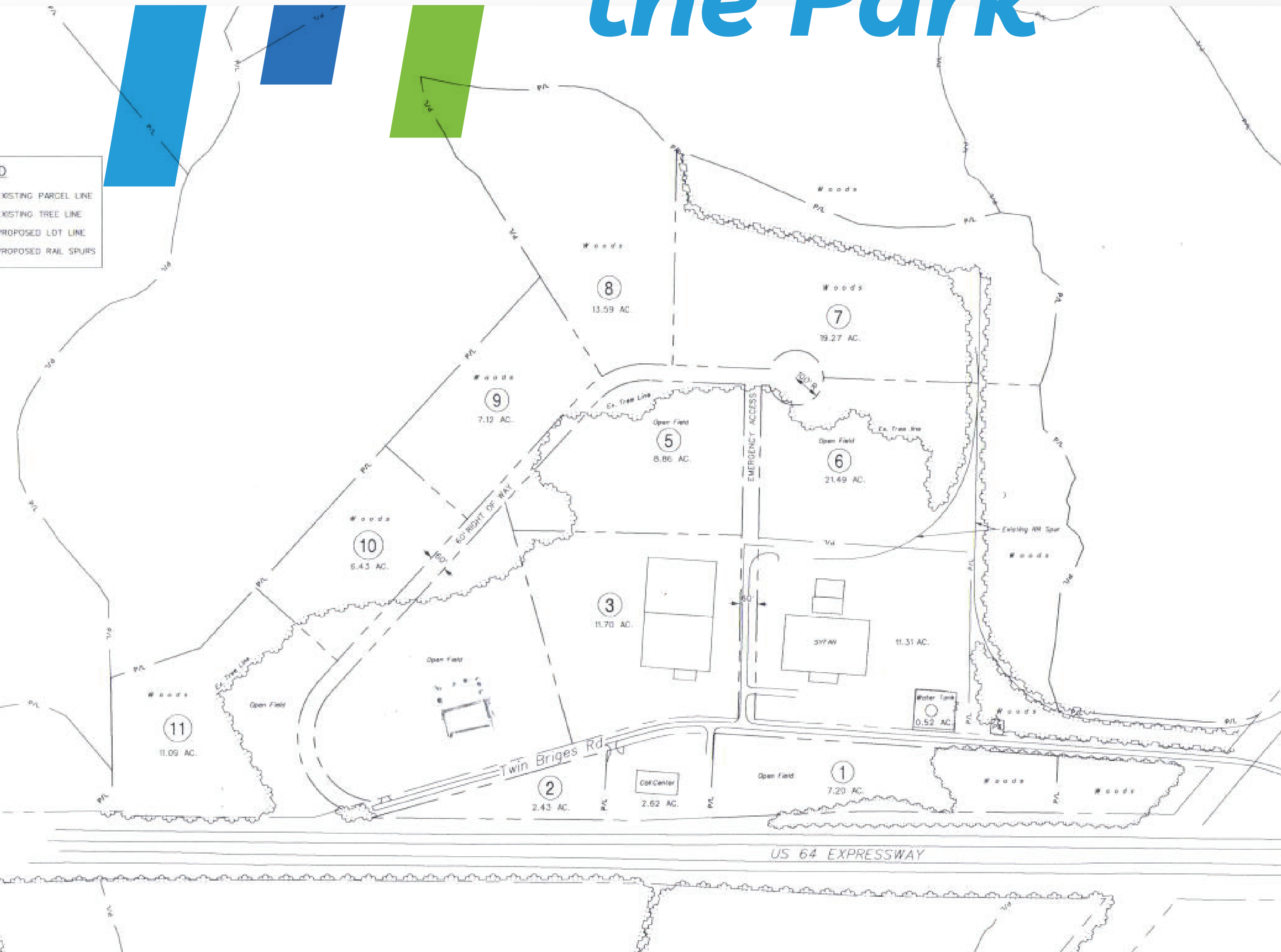
Steve Biggs, President & CEO

(252) 789-4907

sbiggs@martincountyedc.com



the Park






12
sites in the Park

9
sites available

140
acres available for
industrial development



Rail Access

-  Provides a cost-effective, competitive supply chain solution (1 rail car equals 3-4 truckloads)
-  Allows growth of input product volume as facility output increases
-  Most environmentally sound way to move freight over land

Utilities

Electric – Edgecombe Martin EMC

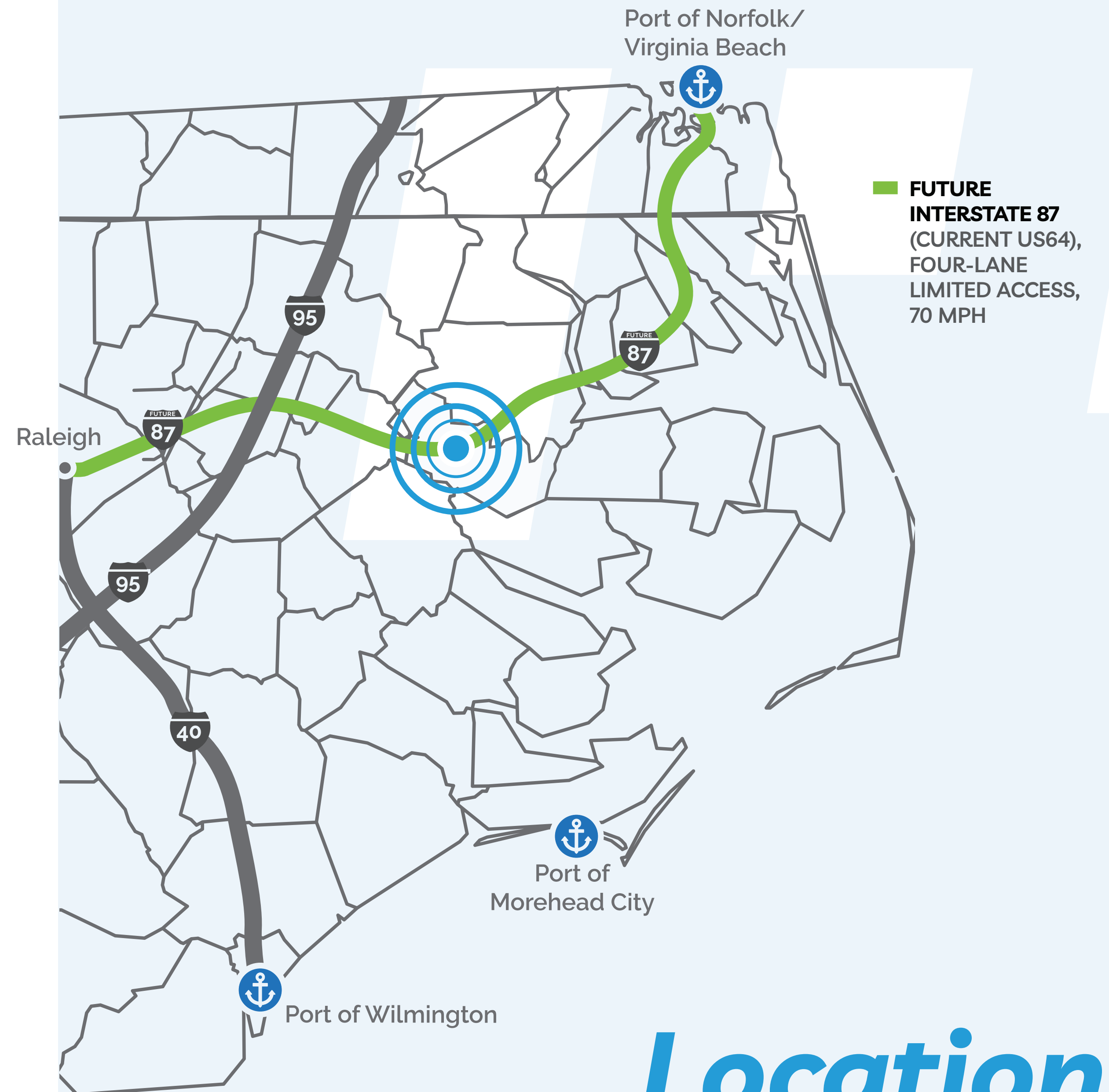
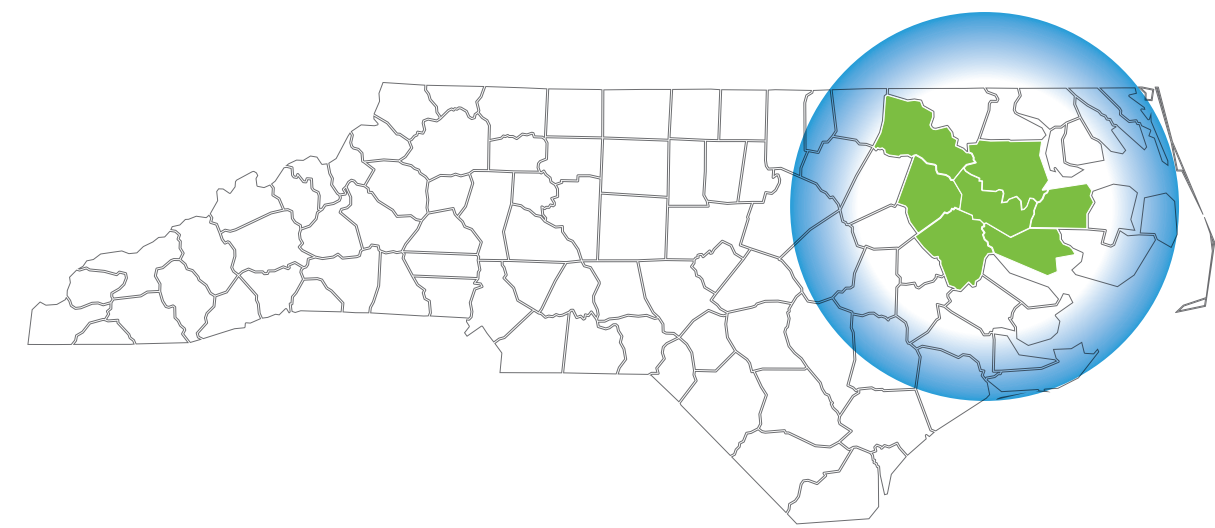
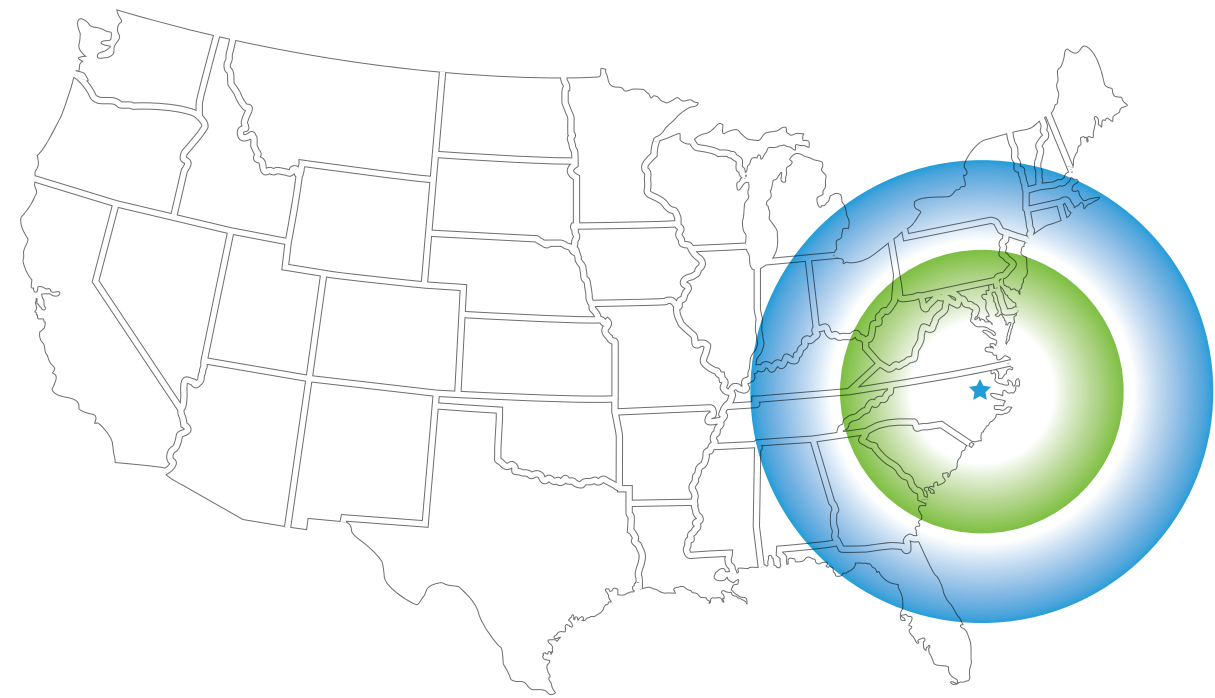
Water & Sewer – Town of Robersonville (Everetts)

Fiber – CenturyLink

Natural Gas – Piedmont Natural Gas (main is 5.2mi away, smaller distribution lines are 3mi away)

Park Ownership

The Park is owned by Martin County, NC.



Labor Force

NORTH
CAROLINA

#2 COMPETITIVE
LABOR
ENVIRONMENT
-AREA DEVELOPMENT, 2018

#1 LARGEST
MANUFACTURING
WORKFORCE
IN THE SOUTHEAST

22,500+
STEM DEGREES ANNUALLY

175,072

SIZE OF LABOR FORCE IN
MARTIN & SURROUNDING
COUNTIES

\$5.3M

in grants dedicated to career/
technical education center

58

community
colleges involved
in NCWorks

12

higher education
institutions within
a 50-mile radius

10

counties involved
in RAMP East
advanced manufacturing sector

Gain more confidence here:

 ***www.martincountyedc.com***

 ***www.edpnc.com***



We know you still have questions, so let's talk!



Steve Biggs, President & CEO

(252) 789-4907

sbiggs@martincountyedc.com